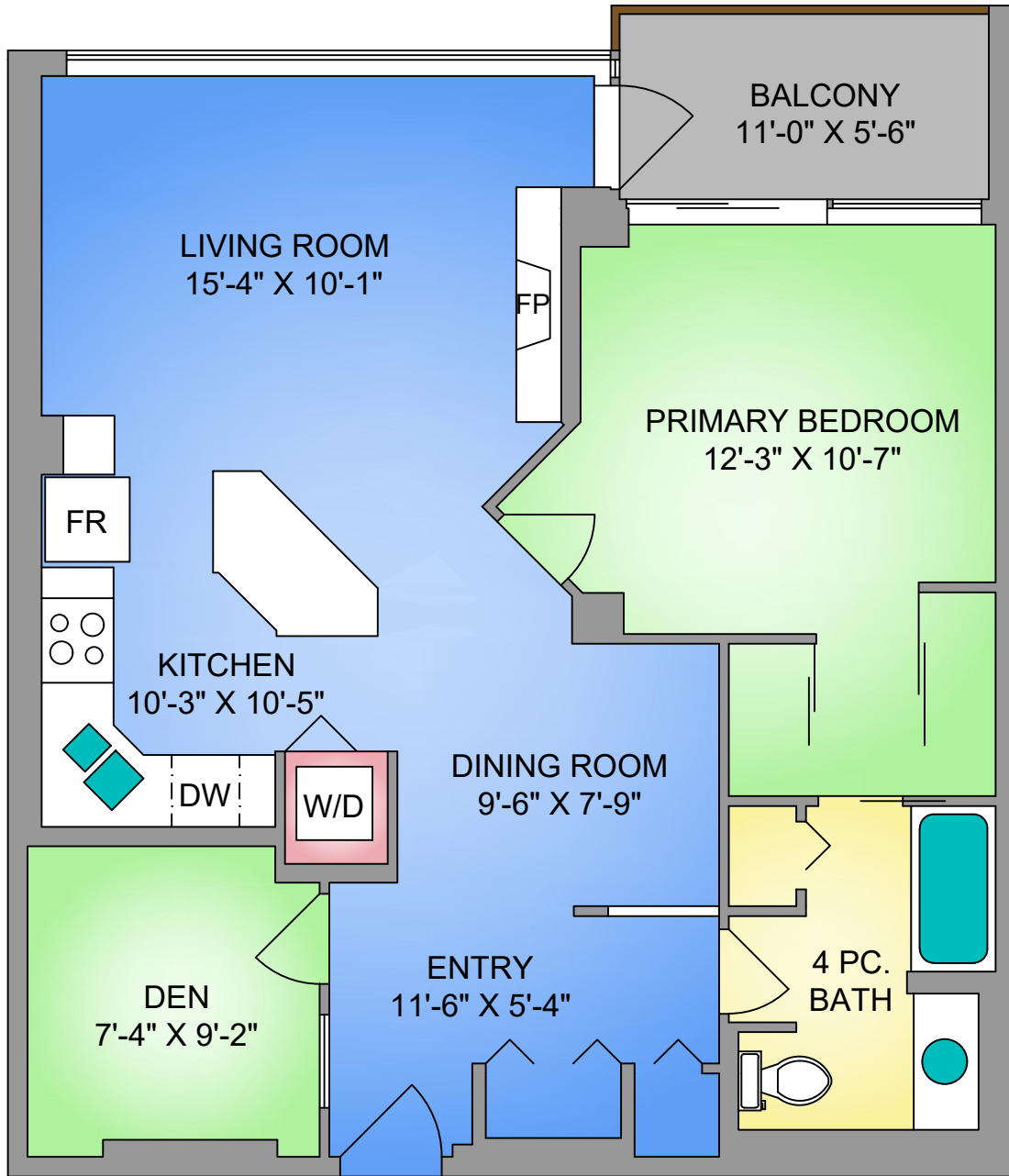


UNIT 501 - 845 YATES STREET

911 SQ. FT.

9'-4" CEILING HEIGHT



THE
PREFERRED HOMES
TEAM

RE/MAX CAMOSUN

preferredhomes.ca



250-884-9753
matt@propermeasure.com
www.propermeasure.com

NORTH



0' 3' 6'

SCALE

UNIT 501 - 845 YATES STREET		
MARCH 07, 2024		
PREPARED FOR THE EXCLUSIVE USE OF PREFERRED HOMES PLANS MAY NOT BE 100% ACCURATE, IF CRITICAL BUYER TO VERIFY.		
FLOOR	AREA (SQ. FT.)	
	FINISHED	BALCONY
FIFTH	911	60